

Stomach Implant for Long-Term Erythropoietin Expression in Rats

By Daniel V. Lejnieks, N. Ramesh, Stella Lau, and William R.A. Osborne

To approach the goal of consistent long-term erythropoietin (Epo) expression *in vivo*, we developed an implantation procedure in which transduced autologous vascular smooth muscle was introduced into rats in a chamber created from a polytetrafluoroethylene (PTFE) ring placed under the serosa of the stomach. The implant became vascularized and permitted the long-term survival of smooth muscle cells expressing Epo. Hematocrits of treated animals increased rapidly and monitored over 12 months gave a mean value of $56.0 \pm 4.0\%$ ($P < .001$; $n = 9$), increased from a presurgery mean of $42.3 \pm 1.6\%$. Hemoglobin levels rose from a presurgery mean of 15.2 ± 0.4 g/dL and for 12 months were significantly elevated with a mean value of 19.5 ± 1.3 g/dL ($P < .001$; $n = 9$). The

ERYTHROPOIETIN (Epo) is a 30-kD glycoprotein hormone that is the regulator of red cell production and maintenance in mammals.^{1,2} Understanding of the molecular mechanisms of its action was significantly advanced by the cloning of human Epo cDNA.^{3,4} Epo from many mammals has now been cloned, and a high degree of sequence similarity and genetic structure has been found.^{1,5} The availability of recombinant human Epo provided a major advance in the treatment of renal failure patients receiving dialysis.⁶ The attendant dangers of transfusion therapy were eliminated and the quality of life of these patients has significantly increased.² The administration of recombinant Epo is now widely used for long-term treatment of anemia associated with chronic renal failure, cancer chemotherapy, and human immunodeficiency virus infections.² Delivery of this hormone by gene therapy rather than by repeated injections would provide substantial clinical and economic benefits and would serve as a model for the expression of other therapeutic proteins.

In adults, Epo is produced primarily in the kidney with the liver as a secondary source.^{7,8} Tissue oxygen tension regulates the overall level of Epo and red cell production, primarily through the rates of gene transcription in the kidney.¹ The hypoxia-responsive cis elements of the Epo gene have been found to be localized to the 3' untranslated region.⁹⁻¹⁵ Deletion analysis has shown that a 24-bp portion of the 3' flanking sequence of the Epo gene was sufficient to give a transcriptional response to hypoxia.¹² The oxygen-sensing mechanism involved in the induction of Epo synthesis includes a 120-kD hypoxia-inducible factor 1 (HIF-1) and other transacting factors.¹⁶ Most interestingly, the oxygen-sensing system initially

hematocrit and hemoglobin levels of control animals receiving human adenosine deaminase (ADA)-expressing cells were not significantly different from baseline ($P > .05$; $n = 5$). In response to tissue oxygenation, kidney, and (to a lesser extent) liver are specific organs that synthesize Epo. Treated animals showed downregulation of endogenous Epo mRNA in kidney over a 12-month period. The PTFE implant provides sustained gene delivery, is safe, and is minimally invasive. It allows easy engraftment of transduced cells and may be applied generally to the systemic delivery of therapeutic proteins such as hormones and clotting factors.

© 1998 by The American Society of Hematology.

identified in Epo-producing cells was found to be present in a wide variety of cell types.^{11,13,14} Unfortunately these regulatory DNA sequences are too large to be suitable for insertion in a retroviral vector.

Long-term *in vivo* gene expression requires both target cells and gene delivery vectors that permit continuous vector-encoded activity. Of the three common virus-based methods of gene transfer, retroviral vectors are probably the most useful for *ex vivo* gene transfer.¹⁷⁻²⁰ Adeno-associated virus (AAV) vectors have many attractive features, such as safety and ability to transduce nonproliferating cells,²¹⁻²⁵ but they do not possess advantages over retroviruses for *ex vivo* gene transduction. Replication-defective retroviral vectors can be made with high titers and will infect a wide variety of cell types. Infection results in stable proviral integration into the host chromosome providing gene expression for the lifetime of the cell and its progeny.¹⁷⁻²⁰ Therapeutic genes can be expressed at high level from the viral long terminal repeat (LTR) promoter/enhancer or strong internal promoters. Recently, the incorporation of internal ribosome entry sites from picornaviruses into retroviral vectors has allowed the generation of bicistronic vectors and subsequent advantages in linked-gene selection.²⁶⁻²⁸

Nonhematopoietic cells studied as vehicles for gene therapy include skin fibroblasts, myoblasts, and vascular smooth muscle cells. Skin fibroblasts are easily obtained, cultured, and transduced but have a major disadvantage of inactivating vector sequences after transplantation.^{29,30} Myoblasts represent a promising target cell type for gene therapy. Transduced skeletal myoblasts have been used to deliver Epo in mice,³¹⁻³³ and transplantation of retrovirally transduced skeletal muscle myoblasts has been successfully achieved in dogs with alpha-L-iduronidase deficiency.³⁴ Intramuscular injection of plasmid DNA has produced systemic expression of Epo in mice.³⁵

Smooth muscle cells are present within the vasculature as a multilayered mass of long-lived cells in proximity to the circulation and have been investigated as targets for gene therapy.³⁶⁻⁴² We have shown that transduced vascular smooth muscle cells seeded into carotid arteries in the rat will provide sustained expression of both marker and therapeutic genes.^{36,38,42} However, while showing the potential of smooth muscle cells to provide long-term gene expression of therapeutic proteins, this procedure may not be applied to patients as it requires arterial injury to achieve cell engraftment.^{36,38,41} As an alternative site for smooth muscle cell implantation, we recognized

From the Department of Pediatrics, University of Washington, Seattle, WA.

Submitted December 8, 1997; accepted March 27, 1998.

Supported by Grant Nos. DK 43727, DK 47754, and DK 50686 from the National Institutes of Health.

Address reprint requests to William R.A. Osborne, PhD, Department of Pediatrics, MS 356320, University of Washington, Seattle, WA 98195.

The publication costs of this article were defrayed in part by page charge payment. This article must therefore be hereby marked "advertisement" in accordance with 18 U.S.C. section 1734 solely to indicate this fact.

© 1998 by The American Society of Hematology.

0006-4971/98/9203-0025\$3.00/0

that the tissue plane between the tunica muscularis and tunica serosa might provide a niche for retention of transduced smooth muscle cells. This tissue is composed of smooth muscle cells, is well vascularized, and is able to provide nutrition for implanted cells. Smooth muscle cells are present at this site, and it is important to the survival of transplanted cells that they are a normal constituent of the targeted area. To examine the potential of this method of cell implantation to provide long-term gene expression we studied the effect of Epo secretion on hematopoiesis in rats.

MATERIALS AND METHODS

Construction of retroviral vectors. The retroviral vector LrEpSN was made by inserting an *EcoRI-BamHI* fragment of the rat Epo cDNA into LXS_N.^{38,43} A plasmid containing the rat Epo gene was kindly provided by Drs J.-P.R. Boissel and H.F. Bunn, Boston, MA.⁵ The amphotropic retroviruses and the control retroviral vector LAS_N, encoding human adenosine deaminase (ADA), were generated as described earlier.⁴⁴

Cell culture. Rat smooth muscle cell cultures were prepared by enzymatic digestion of the aorta from a male Fisher 344 rat, and the cells were characterized by positive staining for muscle cell-specific actins with HHF35 antibody³⁷ and staining negative for von Willebrand factor,³⁷ an endothelial cell specific marker. Ecotropic PE501 and amphotropic PA317 retrovirus packaging cell lines,^{43,45} NIH 3T3 thymidine kinase negative cells,⁴⁵ and primary cultures of rat smooth muscle cells were grown in Dulbecco/Vogt modified Eagle's medium (DMEM) supplemented with 10% fetal bovine serum in humidified 5% CO₂ at 37°C. Early passage smooth muscle cells were exposed to 16-hour virus harvests from PA317-LrEpSN or PA317-LAS_N amphotropic virus-producing cell lines for a period of 24 hours in the presence of polybrene (4 µg/mL). Infected cells were selected in medium containing G418 at 1 mg/mL. Vascular smooth muscle cells infected with LrEpSN and selected in 1 mg/mL G-418 antibiotic secreted 6.7 mU/24 h per 10⁵ cells of Epo.³⁸ In experiments to determine cell distribution in polytetrafluoroethylene (PTFE) implants, LrEpSN-transduced cells were labeled with the fluorescent marker 1,1'-dioctadecyl-3,3,3',3'-tetramethylindocarbocyanine perchlorate (DiI).³⁶

Epo mRNA analysis. Total RNA was isolated from rat kidney by homogenization in the presence of RNazol. Using SuperScript reverse transcriptase (GIBCO-BRL, Gaithersburg, MD), 1 µg of total RNA was reverse-transcribed in the presence of random hexamer primers. Polymerase chain reaction (PCR; 30 cycles) was performed with rat Epo-specific primers (5' AGG CGC GGA GAT GGG GGT GC 3' and 5' CCC CGG AGG AAG TTG GAG TAG 3') to give a 540-bp amplified fragment. An aliquot of the amplified reaction mixture was electrophoresed in a 2% agarose gel and, after Southern transfer, the membrane was hybridized with a ³²P-labeled 500-bp Epo cDNA probe. As a control for RNA extraction, integrity, reverse transcription, and amplification, β-actin-specific primers (5' GTG GGG CGC CCC AGG CAC CA 3' and 5' CTC CTT AAT GTC ACG CAC GAT TTC 3') were used to amplify a 500-bp fragment from the same cDNA preparation. Equal amplification of the samples was confirmed by both ethidium bromide staining and subjecting diluted aliquots of each sample to agarose electrophoresis, Southern transfer, and hybridization of the transferred DNA to a β-actin-specific ³²P-cDNA probe.

Smooth muscle cell implantation. Rats were anesthetized by intraperitoneal (IP) injection with 44 mg/kg ketamine, 5 mg/kg xylazine, and 0.5 mg/kg acepromazine. All rats received 0.04 mg dexamethasone IP just before surgery. An area from thoracic inlet to the pubis was prepared for surgery, and a 3-cm midline abdominal incision was made from the xyphoid to the umbilicus. The stomach was temporarily exteriorized and held in place with a mosquito hemostat. A 0.5-cm

superficial incision was made in the capsule on the cranial face of the body of the stomach, and a small pocket approximately 0.6 cm in diameter was created under the capsule using blunt dissection. A small PTFE ring (inner diameter 4 mm, outer diameter 6 mm) was inserted into the pocket and sutured in place using 5-0 maxon on a taper needle in a simple continuous pattern. The suture material was drawn tightly to constrict the ring to a final inner diameter of 2 to 3 mm before finishing the knot. The fibrous tunic directly overlying the ring was cryofrozen using a steel probe, and the ring was mechanically elevated to prevent the freezing of the underlying muscular layer to minimize tissue damage. The ring was rinsed with 0.9% saline to remove any blood clots formed during surgery. Cell aliquots of 1 × 10⁶ cells/50 mL media were then introduced into the center of the ring through a 24-g intravenous (IV) catheter. Animals received two rings each containing 1 × 10⁶ transduced vascular smooth muscle cells expressing either Epo or human ADA.

Blood analysis. Anticoagulated blood samples (300 µL) were obtained from the tail vein and reticulocyte count determined by vital staining with brilliant cresyl blue and cell counting by standard techniques. Hematocrit, hemoglobin, platelet, and white blood cell (WBC) number were measured using a Coulter counter (Coulter Immunology, Hialeah, FL).

RESULTS

To achieve cell implantation we positioned PTFE rings under the serosal plane of the rat stomach to create an area above the muscle layer enclosed by the serosa membrane. The hematocrits of animals implanted with Epo-secreting transduced cells increased steadily over 50 days from a mean of 42.3 ± 1.6% to a maximum of 67.5 ± 3.1% and remained elevated with a mean value of 56.0 ± 4.0% (*P* < .001) over the 12-month observation period (Fig 1 and Table 1). Hemoglobin levels rose from a presurgery mean of 15.2 ± 0.4 g/dL to a maximum of 22.6 ± 1 g/dL at around 7 weeks and at 12 months were significantly elevated with a mean value of 19.5 ± 1.3 g/dL (*P* < .001). The hematocrit and hemoglobin levels of control animals treated with transduced cells expressing human ADA were not significantly different from baseline during the experiment (*P* > .05; Table 1). Greater than 95% of the treated animals showed significant increases in red cell production, indicating this procedure is very reproducible. The control hematological levels were in agreement with normal rat blood values.⁴⁶ WBC and platelet counts remained within the normal range during the course of the experiment in both the treated and control groups (Table 1). This was expected because previous studies have documented the selective effect of sustained Epo delivery on hematopoiesis with no significant changes in leukocyte or megakaryocyte production.^{6,38,47,48} Reticulocytes were elevated

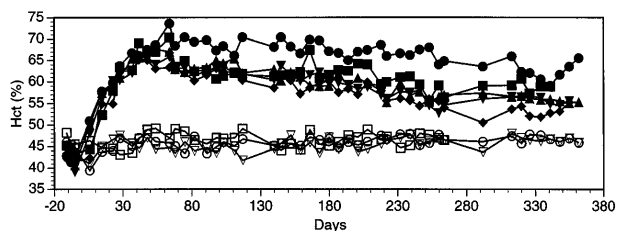


Fig 1. Effect of seeding of transduced vascular smooth muscle cells on hematocrit (Hct). Closed symbols represent animals seeded with LrEpSN-transduced cells, and open symbols are control rats receiving LAS_N-transduced cells.

Table 1. Treated and Control Rat Blood Cell Values

	Presurgery Values	1-Year Postsurgery Values
LASN Control (n = 5)		
Hct (%)	45.5 (± 1.5)	46 (± 2.5)*
Hb (g/dL)	15.7 (± 0.4)	16.4 (± 0.5)*
WBC ($\times 10^{-3}$)/ μ L	9.8 (± 2)	7.8 (± 1.6)*
Plt ($\times 10^{-3}$)/ μ L	807 (± 109)	737 (± 101)*
LrEpSN Treated (n = 9)		
Hct (%)	42.3 (± 1.6)	56 (± 4)†
Hb (g/dL)	15.2 (± 0.4)	19.5 (± 1.3)†
WBC ($\times 10^{-3}$)/ μ L	10.7 (± 1.5)	10.7 (± 2.3)*
Plt ($\times 10^{-3}$)/ μ L	727 (± 63)	687 (± 62)*

Abbreviations: Hct, hematocrit; Plt, platelets; WBC, white blood cells; Hb, hemoglobin.

* $P > .05$.

† $P < .001$.

in treated rats and not in controls. The mean value presurgery was 1.9%, with a range of 0.5% to 3.5%, and the postsurgery mean was 3.7%, with a range of 1.3% to 10.3%. The reticulo-cyte counts peaked between 10 to 30 days, in contrast to implantation of transduced smooth muscle cells on the carotid artery, which gave peak levels at about 8 to 14 days.³⁸ The single administration of dexamethasone at the time of surgery

increased the red cell production of treated animals to implantation of Epo-secreting cells. At 2 months animals receiving dexamethasone had a mean hematocrit of 59% compared with a mean hematocrit of 51% recorded from untreated animals (data not shown).

A rat showing an elevated hematocrit of 63% at 12 months after surgery was sacrificed, and the PTFE implant was removed, fixed, and stained with hematoxylin and eosin. A photomicrograph of a cross-section showed tissue within and around the PTFE graft that was fully integrated and well vascularized (Fig 2). This suggests that the PTFE structure is well tolerated between the muscle and serosal layers.

To show that transduced vascular smooth muscle cells expressing Epo are contained within the PTFE ring structure, Epo-secreting cells were labeled with DiI, a fluorescent dye, before implantation. Unlabeled Epo-secreting cells were implanted in control rats. At 2 months after surgery a rat with a hematocrit of 68% was sacrificed and tissue cross-sections photographed (Fig 2). A large mass of dye-marked fluorescing cells was evident in the area encompassed by the PTFE ring, and fluorescent cells were not visible in adjacent areas or in the control sections (Fig 2). These data show that transduced vascular smooth muscle cells remain in the PTFE-enclosed area and provide therapeutic Epo expression for at least 12 months.

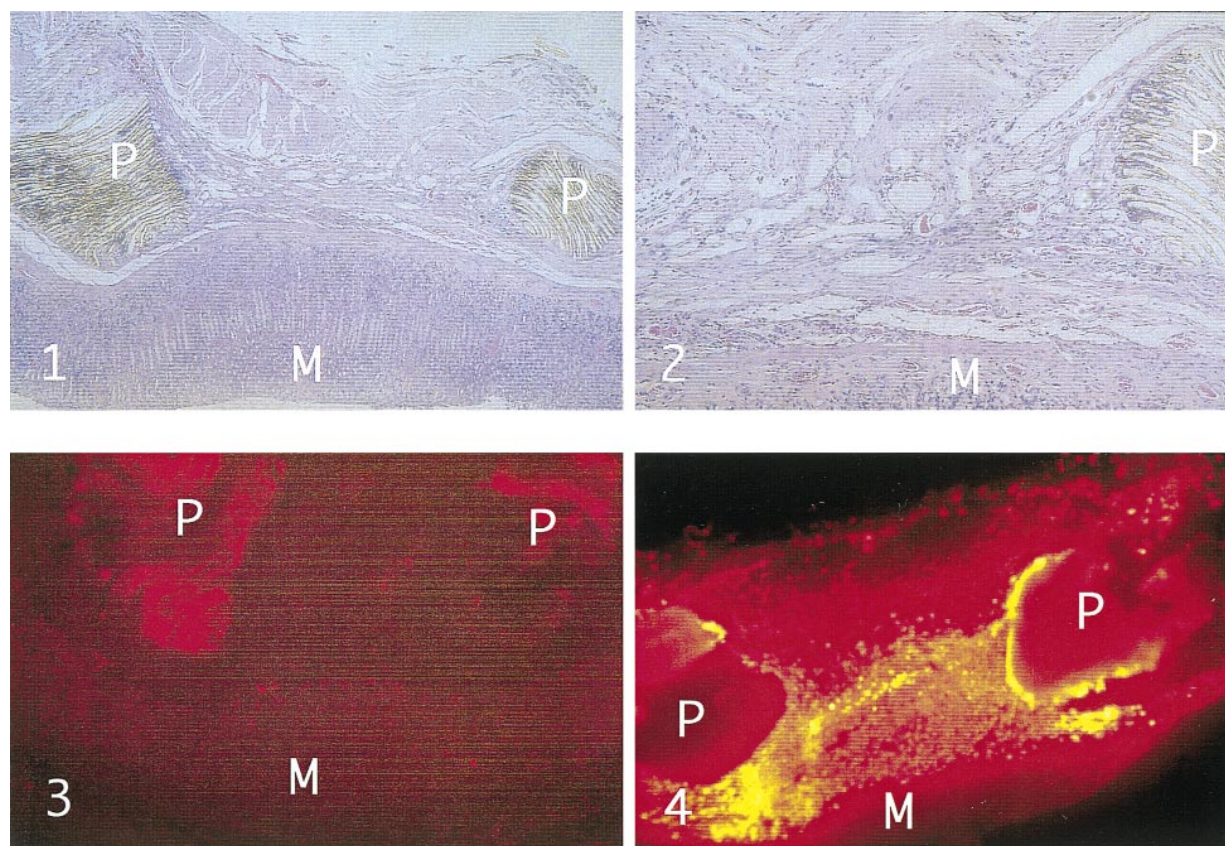


Fig 2. Histological cross-sections of stomach PTFE implants containing transduced smooth muscle cells. Tissues in panels 1 and 2 were obtained at 12 months postsurgery from a rat that had a hematocrit of 62%, fixed in formalin, and stained with H&E. PTFE implants containing Epo-secreting vascular smooth muscle cells unlabeled (panel 3) or marked with DiI (panel 4) were removed 2 months postsurgery from a rat with a hematocrit of 67%, frozen, sectioned, and photographed using a Nikon Microphot FXA equipped with a rhodamine filter. PTFE material is denoted P, and mucosal tissue as M. (Panels 1, 2, and 4: $\times 40$ original magnification; panel 3: $\times 100$ original magnification).

To determine if vector-encoded Epo expression resulted in downregulation of endogenous Epo,⁸ test rats were sacrificed when elevated hematocrit and hemoglobin levels were established. Control rats that received LASN-transduced cells were sacrificed at similar time points. Because Northern analysis is not sensitive enough to detect endogenous Epo message, RNA obtained from kidney was subjected to reverse transcription (RT)-PCR using rat Epo-specific probes.⁵ Endogenous Epo mRNA in kidneys of rats seeded with LrEpSN-transduced cells and analyzed at 11 and 12 months was greatly reduced in comparison to a control kidney, suggesting significant downregulation of endogenous Epo production (Fig 3). Epo mRNA in liver was not detectable by this RT-PCR method (data not shown). Southern band intensities from RT-PCR amplification of actin mRNA isolated from test and control tissues were similar, indicating equivalence in RNA isolation and amplification (Fig 3).

DISCUSSION

We have described a novel site to implant transduced cells for the systemic delivery of proteins. The time from surgery to maximum hematocrit in this study was about 50 days, nearly twice as long as the 3-week induction period we observed using Epo-secreting smooth muscle cells seeded onto denuded rat carotid arteries.³⁸ This difference in achieving maximal hematocrit may be due to arterial seeding providing immediate systemic secretion of Epo, whereas a stomach implant requires time to establish vascularization and a pathway for hormone delivery to the bone marrow. The normal kinetics of red cell production involve a 2- to 3-week period from Epo secretion to mature red cell formation from erythroid precursors.²

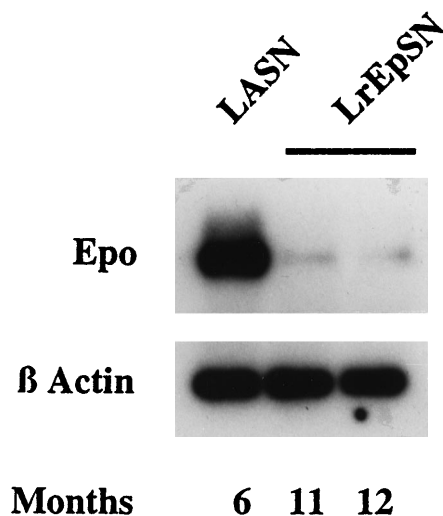


Fig 3. Epo mRNA analysis. Total RNA was isolated from kidneys of rats receiving Epo expressing LrEpSN-transduced cells and control rats receiving LASN-transduced cells expressing human ADA. RT-PCR was performed with rat Epo-specific primers to give a 540-bp amplified segment that was subjected to electrophoresis and hybridized with a ³²P-labeled Epo probe. As a control RT-PCR was performed using β -actin-specific primers to amplify a 500-bp fragment from the same cDNA preparation. Diluted aliquots of each sample were subjected to agarose electrophoresis, Southern transfer, and hybridization of the transferred DNA to a β -actin-specific ³²P-cDNA probe.

The dye-labeling experiment showed that placement of cells within the PTFE ring initiated the creation of a structure that served both to retain and nurture implanted cells that were able to provide sustained, high-level Epo expression. Extrapolation of the increases in red cell production obtained over 12 months suggests that the cell implant would function to deliver potentially therapeutic Epo levels for greater than 3 years, longer than the life time of the rat.

The protocol used in these experiments involved the single administration of dexamethasone at the time of surgery. This was based on initial experiments showing that dexamethasone, a powerful synthetic glucocorticoid, enhanced the response of treated animals to implantation of Epo-secreting cells. The viral LTR promoter, which drives Epo cDNA expression, contains a known steroid-responsive element, but the short serum half-life of dexamethasone (1.8 to 4.7 hours) makes an effect mediated through this promoter element unlikely to be sustained for 12 months.⁴⁹ Dexamethasone has been used clinically to decrease surgical inflammation and edema and to decrease immune-mediated tissue destruction, making preservation of the transplanted cells by dexamethasone treatment the most probable explanation for increased cell survival and hematocrit.^{50,51}

The analysis of kidney Epo mRNA indicated that the systemic delivery of hormone from the stomach implant caused downregulation of endogenous Epo production, and this was sustained for at least 12 months. These data provide evidence of long-term high-level Epo expression from transplanted cells and, furthermore, indicate that the elevated red cell production we observed was mediated by implanted transduced cells with a minimal contribution from endogenous Epo. Prolonged red cell production in excess of 60% from genetically modified cells is a significant result from this cell transduction and implantation protocol. In these experiments we used the strong viral LTR promoter to achieve unregulated Epo expression. Although multiple *cis* genetic elements have been identified that induce hypoxia-mediated Epo expression in kidney and liver, they have yet to be defined in a size suitable for insertion in a retroviral vector^{9,10,52} and may not function in vascular smooth muscle cells.

The expression of bacterial neomycin phosphotransferase from the virus we used (LrEpSN) did not appear to cause an immune-mediated loss of transplanted cells. This is supported by the longevity of cell survival and the sustained red cell overproduction. The elimination of autologous transduced cells by an immune-mediated mechanism to foreign transgenes has been reported in rats receiving glioma cells⁵³ and human T-cell transplantations.⁵⁴ The smooth muscle cells we targeted for gene expression and implantation are not usually involved in antigen processing and presentation, and the neo gene is expressed in the cytosol and may not be secreted, providing an explanation for the apparent lack of immune-mediated cell loss.

The persistence for at least 12 months of transduced smooth muscle cells contained within a PTFE gastric ring suggests this approach may be useful for human gene therapy. Vascular smooth muscle cells can be obtained from a peripheral vein and can be cultured, transduced, and selected with high efficiency. This method may be applied to patients by using laparoscopic surgery to implant PTFE structures to contain therapeutically relevant cell numbers. We estimate that 10⁸ transduced vascular

smooth muscle cells would provide a therapeutic supply of Epo to an 80-kg patient,³⁸ and implantation of this cell number is achievable in a PTFE graft. In the absence of a hypoxia-regulated Epo promoter of a size to permit inclusion in a virus, retroviral-mediated red cell production will be controlled by the number of cells implanted. As we know the level of transduced Epo gene expression we can achieve a desired hematocrit by manipulating the number of cells implanted. The use of laparoscopes is now widespread and affords a minimally invasive method to access and perform surgery on the stomach and intestine. This study and others^{36,38,42} have shown that retroviral vectors are not subject to vector inactivation in smooth muscle cells. A patient's cells can be stored frozen for an indefinite period enabling this process to be repeated if desired. Cells can be modified to express and systemically deliver therapeutic proteins such as granulocyte colony-stimulating factor, insulin, clotting factors, and enzymes such as glucocerebrosidase for the treatment of Gaucher's disease. Furthermore, this method is inherently safe because transplanted cells remain within the PTFE structure and can therefore be removed if necessary.

ACKNOWLEDGMENT

We thank Drs D.C. Dale, S.C. Barry, D. Liggitt, and A.M. Gown for much helpful advice, and Drs J.-P.R. Boissel and H.F. Bunn for kindly supplying the rat Epo cDNA.

REFERENCES

- Koury MJ, Bondurant MC: The molecular mechanism of erythropoietin action. *Eur J Biochem* 210:649, 1992
- Spivak JL: Hematology/Oncology Clinics of North America. Erythropoietin: Basic and clinical aspects. *Hematol Oncol Clin North Am* 8:1043, 1994
- Lin F-K, Suggs S, Lin C-H, Browne JK, Smalling R, Egrie JC, Chen KK, Fox GM, Martin F, Stabinsky Z, Bradrawi SM, Lai P-H, Goldwasser E: Cloning and expression of the human erythropoietin gene. *Proc Natl Acad Sci USA* 82:7580, 1985
- Jacobs K, Shoemaker CB, Rudersdorf R, Neill SD, Kaufman RJ, Mufson A, Seehra J, Jones SS, Hewick R, Fritsch EF, Kawakita M, Shimizu T, Miyake T: Isolation and characterization of genomic and cDNA clones of human erythropoietin. *Nature* 313:806, 1985
- Wen D, Boissel J-PR, Tracy TE, Gruninger RH, Mulcahy LS, Czelusniak J, Goodman M, Bunn HF: Erythropoietin structure-function relationships: High degree of sequence homology among mammals. *Blood* 82:1507, 1993
- Eschbach JW, Egrie JC, Downing MR, Brown JK, Adamson JW: Correction of the anemia of end-stage renal disease with recombinant human erythropoietin. Results of a combined phase I and II clinical trial. *N Engl J Med* 316:73, 1987
- Koury ST, Bondurant MC, Koury MJ, Semenza GL: Localization of cells producing erythropoietin in murine liver by in situ hybridization. *Blood* 77:2497, 1991
- Schuster SJ, Koury ST, Bohrer M, Salceda S, Caro J: Cellular sites of extrarenal erythropoietin production in anaemic rats. *Br J Haematol* 81:153, 1992
- Beck I, Weinmann R, Caro J: Characterization of hypoxia-response enhancer in the human erythropoietin gene shows presence of hypoxia-inducible 120-Kd nuclear DNA-binding protein in erythropoietin-producing and nonproducing cells. *Blood* 82:704, 1993
- Blanchard KL, Acquaviva AM, Galsion DL, Bunn HF: Hypoxia induction of the human erythropoietin gene: Cooperation between the promoter and enhancer, each of which contains steroid receptor response elements. *Mol Cell Biol* 12:5373, 1992
- Firth JD, Ebert BL, Pugh SW, Ratcliffe PJ: Oxygen-regulated control elements in the phosphoglycerate kinase 1 and lactate dehydrogenase A gene: Similarities with the erythropoietin 3' enhancer. *Proc Natl Acad Sci USA* 91:6496, 1994
- Madan A, Curtin PT: A 24-base-pair sequence 3' to the human erythropoietin gene contains a hypoxia-responsive transcriptional enhancer. *Proc Natl Acad Sci USA* 90:3928, 1993
- Maxwell PH, Pugh CW, Ratcliffe PJ: Inducible operation of the erythropoietin 3' enhancer in multiple cell lines: Evidence for a widespread oxygen-sensing mechanism. *Proc Natl Acad Sci USA* 90:2423, 1993
- Semenza GL, Roth PH, Fang HM, Wang GL: Transcriptional regulation of genes encoding glycolytic enzymes by hypoxia-inducible factor 1. *J Biol Chem* 269:23757, 1994
- Wang GL, Semenza GL: General involvement of hypoxia-inducible factor 1 in transcriptional response to hypoxia. *Proc Natl Acad Sci USA* 90:4304, 1993
- Wang GL, Semenza GL: Characterization of hypoxia-inducible factor 1 and regulation of DNA binding activity by hypoxia. *J Biol Chem* 268:21513, 1993
- Miller AD: Human gene therapy comes of age. *Nature* 357:455, 1992
- Morgan RA, Anderson WF: Human gene therapy. *Annu Rev Biochem* 62:191, 1993
- Mulligan RC: The basic science of gene therapy. *Science* 260:926, 1993
- Kohn DB: The current status of gene therapy using hematopoietic stem cells. *Curr Opin Pediatr* 7:56, 1995
- Muzyczka N: Use of adeno-associated virus as a general transduction vector for mammalian cells, in Muzyczka N (ed): *Current Topics in Microbiology and Immunology. Viral Expression Vectors* (vol 158). New York, NY, Springer-Verlag, 1992, p 97
- Samulski RJ: Adeno-associated virus: Integration at a specific chromosomal locus. *Curr Opin Genet Dev* 3:74, 1993
- Kessler PD, Podsaloff GM, Chen X, McQuiston SA, Colosi PC, Matelis LA, Kurtzman GJ, Byrne BJ: Gene delivery to skeletal muscle results in sustained expression and systemic delivery of a therapeutic protein. *Proc Natl Acad Sci USA* 93:14082, 1996
- Kaplitt MG, Leone P, Samulski RJ, Xiao X, Pfaff DW, O'Malley KL, During MJ: Long-term gene expression and phenotypic correction using adeno-associated virus vectors in mammalian brain. *Nat Genet* 8:148, 1994
- Snyder RO, Miao CH, Patijn GA, Spratt SK, Danos O, Nagy D, Gown AM, Winther B, Meuse L, Cohen LK, Thompson AR, Kay MA: Persistent and therapeutic concentrations of human factor IX in mice after hepatic gene transfer of recombinant AAV vectors. *Nat Genet* 16:270, 1997
- Adam MA, Ramesh N, Miller AD, Osborne WRA: Internal initiation of translation in retroviral vectors carrying picornavirus 5' nontranslated regions. *J Virol* 65:4985, 1991
- Morgan RA, Couture L, Elroy-Stein O, Ragheb J, Moss B, Anderson WA: Retroviral vectors containing putative internal ribosome entry sites: Development of a polycistronic gene transfer system and applications to human gene therapy. *Nucleic Acids Res* 20:1293, 1992
- Ramesh N, Kim S-T, Wei MQ, Khalighi M, Osborne WRA: High-titer bicistronic vectors employing foot-and-mouth disease virus internal ribosome entry site. *Nucleic Acids Res* 24:2697, 1996
- Ramesh N, Lau S, Palmer TD, Storb R, Osborne WRA: High-level human adenosine deaminase expression in dog skin fibroblasts is not sustained following transplantation. *Hum Gene Ther* 4:3, 1993
- Palmer TD, Rosman GJ, Osborne WRA, Miller AD: Genetically-

modified skin fibroblasts persist long after transplantation but gradually inactivate introduced genes. *Proc Natl Acad Sci USA* 88:1330, 1991

31. Barr E, Tripathy S, Leiden JM: Genetically modified myoblasts for the treatment of erythropoietin-responsive anemias. *J Cell Biochem* 18:DZ012, 1994 (suppl 18A)
32. Hamamori Y, Samal B, Tian J, Kedes L: Myoblast transfer of human erythropoietin gene in a mouse model of renal failure. *J Clin Invest* 95:1808, 1995
33. Naffakh N, Pinset C, Montarras D, Paulin D, Danos O, Heard JM: Long-term secretion of therapeutic proteins from genetically modified skeletal muscles. *Hum Gene Ther* 7:11, 1996
34. Shull RM, Lu X, McEntee MF, Bright RM, Pepper KA, Kohn DB: Myoblast gene therapy in canine mucopolysaccharidosis I: Abrogation by an immune response to alpha-L-iduronidase. *Hum Gene Ther* 7:1595, 1996
35. Tripathy SK, Svensson EC, Black BH, Goldwasser G, Margalith M, Hobart PM, Leiden JM: Long-term expression of erythropoietin in the systemic circulation of mice after intramuscular injection of a plasmid DNA vector. *Proc Natl Acad Sci USA* 93:10876, 1996
36. Clowes MM, Lynch CM, Miller AD, Miller DG, Osborne WRA, Clowes AW: Long-term biological response of injured rat carotid artery seeded with smooth muscle cells expressing retrovirally introduced human genes. *J Clin Invest* 93:644, 1994
37. Geary RL, Clowes AW, Lau S, Vergel S, Dale DC, Osborne WRA: Gene transfer in baboons using prosthetic vascular grafts seeded with retrovirally-transduced smooth muscle cells: A model for local and systemic gene therapy. *Hum Gene Ther* 5:1213, 1994
38. Osborne WRA, Ramesh N, Lau S, Clowes MM, Dale DC, Clowes AW: Gene therapy for long-term expression of erythropoietin in rats. *Proc Natl Acad Sci USA* 92:8055, 1995
39. Ohno T, Gordon D, San H, Pompili MJ, Nabel GJ, Nabel EG: Gene therapy for vascular smooth muscle cell proliferation after arterial injury. *Science* 265:781, 1994
40. Plautz G, Nabel EG, Nabel GJ: Introduction of vascular smooth muscle cells expressing recombinant genes in vivo. *Circulation* 83:578, 1991
41. Lejniaks DV, Han SW, Ramesh N, Lau S, Osborne WRA: Granulocyte colony-stimulating factor expression from transduced vascular smooth muscle cells provides sustained neutrophil increases in rats. *Hum Gene Ther* 7:1431, 1996
42. Lynch CM, Clowes MM, Osborne WRA, Clowes AW, Miller AD: Long-term expression of human adenosine deaminase in vascular smooth muscle cells of rats: A model for gene therapy. *Proc Natl Acad Sci USA* 89:1138, 1992
43. Miller AD, Rosman GJ: Improved retroviral vectors for gene transfer and expression. *Biotechniques* 7:980, 1989
44. Hock RA, Miller AD, Osborne WRA: Expression of human adenosine deaminase from various strong promoters after gene transfer into human hematopoietic cell lines. *Blood* 74:876, 1989
45. Miller AD, Buttimore C: Redesign of retrovirus packaging cell lines to avoid recombination to helper virus production. *Mol Cell Biol* 6:2895, 1986
46. Schalm OW, Jain NC, Carroll EJ: *Veterinary Hematology* (ed 3). Philadelphia, PA, Lea and Febiger, 1975
47. Semenza GL, Nejfelt MK, Chi SM, Antonarakis SE: Hypoxia-inducible nuclear factors bind to an enhancer element located 3' to the human erythropoietin gene. *Proc Natl Acad Sci USA* 88:5680, 1991
48. Spivak JL, Pham T, Isaacs M, Hankins WD: Erythropoietin is both a mitogen and a survival factor. *Blood* 77:1228, 1991
49. Axelrod L: Corticosteroid therapy, in Becker EL (ed): *Principles and Practice of Endocrinology and Metabolism*. Philadelphia, PA, Lippincott, 1995, p 695
50. Fletcher DS, Osinga D, Bonney RJ: Role of polymorphonuclear leukocytes in connective tissue breakdown during the reverse Arthus reaction. *Biochem Pharmacol* 35:2601, 1986
51. Weber CR, Griffin JM: Evaluation of dexamethasone for reducing postoperative edema and inflammatory response after orthognathic surgery. *J Oral Maxillofac Surg* 52:35, 1994
52. Madan A, Lin C, Hatch SL, Curtin PT: Regulated basal, inducible, and tissue-specific human erythropoietin gene expression in transgenic mice requires multiple cis DNA sequences. *Blood* 85:2735, 1995
53. Tapscott SJ, Miller AD, Olsen JM, Berger MS, Groudine M, Spence AM: Gene therapy of rat 9L gliosarcoma tumors by transduction with selectable genes does not require drug selection. *Proc Natl Acad Sci USA* 91:8185, 1994
54. Riddel SR, Elliott M, Lewinsohn DA, Gilbert MJ, Wilson L, Manley SA, Lupton SD, Overell RW, Reynolds TC, Corey L, Greenberg PD: T-cell mediated rejection of gene-modified HIV-specific cytotoxic T lymphocytes in HIV patients. *Nat Med* 2:216, 1996